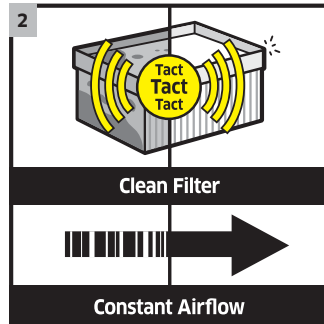




IVC 60/12-1 Tact EC

Kesintisiz çalışma için otomatik filtre temizleme sistemi ve aşınmayan EC motora sahip kompakt endüstriyel elektrikli süpürge. Üretim alanlarındaki ince tozlar için idealdir. Aynı zamanda sabit kullanımlar için de uygundur.



1 Sürekli çalışma için tasarlanmıştır

- Fırçasız EC motorlar aşınmaya dayanıklı ve üç vardiya için ideal, asgari 5000 saat hizmet ömrü

2 TACT sistemi (Otomatik Filtre Temizleme Sistemi)

- Sabit yüksek emiş gücü için, bu iki filtre otomatik olarak güçlü hava püskürtmeleri ile temizlenir.

3 Çökertme mekanizmasına sahip atık konteyneri

- Çökertme mekanizmalı atık konteyneri, çekilen atıklar ağır olduğu zaman ergonomik bir şekilde boşaltmaya olanak sağlar.

4 Düz oluklu kompakt filtrelili

- Kompakt düz oluklu filtre, küçük ve açık bir tasarımla daha geniş bir filtreleme alanı sağlar.



IVC 60/12-1 Tact EC

■ Antistatik ekipman

Teknik veriler

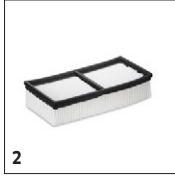
Sipariş No.	1.576-102.0	
EAN Kodu	4039784463714	
Mevcut tip	Ph / V / Hz	1 / 220 - 240 / 50 - 60
Hava debisi	l/s / m³/saat	62,5 / 225
Vakum gücü	mbar / kPa	244 / 24,4
Konteyner kapasitesi	l	60
Motor değerleri	kW	1,2
Filtre alanı	m²	0,95
Bağlantı çapı	Çap 70	
Standard aksesuar çapı	Çap 50 / Çap 40	
Ses seviyesi	dB(A)	74
Ağırlık	kg	59
Boyutlar (U x G x Y)	mm	970 x 690 x 995

Ekipman

Makineye dahil aksesuarlar	hayır
-----------------------------------	-------

IVC 60/12-1 TACT EC 1.576-102.0

KÄRCHER



		Sipariş No.	Anzahl	Dummy	Dummy	Dummy	Fiyat	Tanımlama	
Düz pleli ffiltr (Kağıt)									
Yassı kıvrılmış filtre, kağıt	1	6.907-276.0	1 Adet						<input type="checkbox"/>
Düz pileli filtre (PTFE)									
Flat-pleated filter packaged PTFE	2	6.907-449.0	1 Adet						<input type="checkbox"/>

Mevcut aksesuarlar

IVC 60/12-1 TACT EC 1.576-102.0

KÄRCHER



		Sipariş No.	Miktar		uzun- luk/ Genişlik	Fiyat	Tanımlama	
Adaptör Aksesuarı								
Adapter DN50/DN51	1	9.989-603.0		DN 50				<input type="checkbox"/>
Adapter DN51/DN50	2	9.989-601.0		DN 50				<input type="checkbox"/>
Adapter DN50/DN61	3	9.989-602.0		DN 50				<input type="checkbox"/>
Adapter DN61/DN50	4	9.989-604.0		DN 50				<input type="checkbox"/>
Redüktörler								
Reducer DN 70/DN 50 (SBC)	5	9.977-772.0		DN 70				<input type="checkbox"/>
Reducer DN70/DN40	6	9.989-690.0		DN 70				<input type="checkbox"/>
	7	9.981-231.0		DN 50				<input type="checkbox"/>
Reducer V2A DN72 auf DN52	8	9.989-712.0		DN 70				<input type="checkbox"/>
Reducer V2A DN70/DN40	9	9.989-713.0		DN 70				<input type="checkbox"/>
Geniřleticiler								
	10	9.981-936.0		DN 40				<input type="checkbox"/>
	11	9.981-921.0		DN 50				<input type="checkbox"/>
Distribütörler								
Distribütör DN70/DN50/DN50	12	9.989-611.0		DN 70				<input type="checkbox"/>
PVC								
Hose PVC DN40 3 m	13	9.989-647.0		DN 40				<input type="checkbox"/>
Hose PVC DN40 5 m	14	9.989-614.0		DN 40				<input type="checkbox"/>
Hose without connection PVC DN40 15 m	15	9.989-633.0		DN 40				<input type="checkbox"/>
EVA								
Extension hose EVA el. DN42 3m	16	9.988-088.0		DN 40				<input type="checkbox"/>
Extension hose EVA el. DN42 5m	17	9.988-089.0		DN 40				<input type="checkbox"/>
Hose without connection EVA DN40 15 m	18	9.989-630.0		DN 40				<input type="checkbox"/>
ME								
Hose connection kit DN40	19	9.989-627.0		DN 40				<input type="checkbox"/>
PU								
Hose PU DN40 3 m	20	9.989-617.0		DN 40				<input type="checkbox"/>
Hose PU DN40 5 m	21	9.989-618.0		DN 40				<input type="checkbox"/>
Hose without connection PU DN40 15 m	22	9.989-637.0		DN 40				<input type="checkbox"/>
ME-PU								
Hose ME-PU DN40 3 m	23	9.989-621.0		DN 40				<input type="checkbox"/>
	24	9.989-622.0		DN 40				<input type="checkbox"/>
Hose without connection ME-PU DN40 15 m	25	9.989-640.0		DN 40				<input type="checkbox"/>
Kollari								
Hand grip curved 45°, DN 42	26	9.977-679.0		DN 40				<input type="checkbox"/>
Hand grip curved stainless steel 45°IK D	27	9.989-036.0		DN 40				<input type="checkbox"/>
Elbow aluminium 45° DN40	28	9.989-544.0						<input type="checkbox"/>
Elbow aluminium 45° DN50	29	9.989-547.0						<input type="checkbox"/>

Mevcut aksesuarlar

IVC 60/12-1 TACT EC 1.576-102.0

KÄRCHER



		Sipariş No.	Miktar	uzun- luk/ Genişlik	Fiyat	Tanımlama	
Emiş boruları							
Suction tube 750 mm DN40	30	9.977-525.0		DN 40			<input type="checkbox"/>
Extension pipe stainless steel DN40 US	31	9.989-039.0		DN 40			<input type="checkbox"/>
Extension pipe stainless steel DN50 IK,	32	9.988-114.0		DN 50			<input type="checkbox"/>
Suction tube carbon 1500mm DN40	33	9.989-552.0		DN 40			<input type="checkbox"/>
Suction tube carbon 1500mm DN50	34	9.989-553.0		DN 50			<input type="checkbox"/>
Standart nozullar							
Standard nozzle PVC DN40	35	9.989-674.0		DN 40			<input type="checkbox"/>
Standard nozzle PVC DN50	36	9.989-673.0		DN 50			<input type="checkbox"/>
Nozzle elastic silicon DN42	37	9.988-401.0		DN 40			<input type="checkbox"/>
Nozzle elastic silicon DN52	38	9.988-402.0		DN 50			<input type="checkbox"/>
Standard nozzle rubber cuttable DN40	39	9.989-677.0		DN 40			<input type="checkbox"/>
Standard nozzle rubber cuttable DN50	40	9.989-675.0		DN 50			<input type="checkbox"/>
	41	9.980-748.0		DN 40			<input type="checkbox"/>
	42	9.980-749.0		DN 50			<input type="checkbox"/>
Bükülebilir standart nozullar							
Nozzle flexible rubber mouthpiece DN40/D	43	9.981-420.0		DN 40			<input type="checkbox"/>
Nozul, çinko kaplamalı, esnek, kauçuk uçlu	44	9.981-421.0		DN 50			<input type="checkbox"/>
	45	9.981-429.0		DN 40			<input type="checkbox"/>
Zemin nozulları							
Floor nozzle Alu 370 mm DN40	46	9.989-683.0		DN 40			<input type="checkbox"/>
Floor nozzle Alu el 370 mm DN40	47	9.989-682.0		DN 40			<input type="checkbox"/>
Multi-purpose nozzle 370mm el. leit., DN	48	9.987-612.0		DN 50			<input type="checkbox"/>
	49	9.989-558.0		DN 40			<input type="checkbox"/>
	50	9.981-923.0					<input type="checkbox"/>
Rubber lips with molding 370mm	51	9.981-914.0					<input type="checkbox"/>
	52	9.981-915.0					<input type="checkbox"/>
Bürstenleiste Satz elektr. leitend, für	53	9.984-939.0					<input type="checkbox"/>
	54	9.980-764.0					<input type="checkbox"/>

Mevcut aksesuarlar

IVC 60/12-1 TACT EC 1.576-102.0

KÄRCHER



		Sipariş No.	Miktar		uzun- luk/ Genişlik	Fiyat	Tanımlama	
Aralık temizleme nozulları								
Slot nozzle flat DN40	55	9.988-116.0			DN 40			<input type="checkbox"/>
Slot nozzle flat DN50	56	9.988-117.0			DN 50			<input type="checkbox"/>
	57	9.981-483.0			DN 40			<input type="checkbox"/>
	58	9.981-482.0			DN 50			<input type="checkbox"/>
Nozzle Crevice nozzle 17 mm x 120 mm DN4	59	9.989-680.0			DN 40			<input type="checkbox"/>
Nozzle Crevice nozzle 25 mm x 120 mm DN4	60	9.989-678.0			DN 40			<input type="checkbox"/>
	61	9.981-442.0			DN 50			<input type="checkbox"/>
	62	9.981-465.0			DN 50			<input type="checkbox"/>
Crevice nozzle slot nozzle V2A AK DN40	63	9.989-193.0			DN 40			<input type="checkbox"/>
Esnek aralık nozulları								
Nozzle Langschaft Silikon DN52	64	9.988-403.0			DN 50			<input type="checkbox"/>
Slot nozzle flexible DN 40	65	9.981-423.0			DN 40			<input type="checkbox"/>
	66	9.981-424.0			DN 50			<input type="checkbox"/>
Slot nozzle flexible DN 50, 20mm	67	9.981-425.0			DN 50			<input type="checkbox"/>
Yüzey memeleri								
Nozzle with connecting piece 90° DN40	68	9.988-118.0			DN 40			<input type="checkbox"/>
Nozzle with connecting piece 90° DN50	69	9.988-119.0			DN 50			<input type="checkbox"/>
Nozzle Surface nozzle Alu 150 mm DN40	70	9.989-666.0			DN 40			<input type="checkbox"/>
Nozzle Surface nozzle Alu 150 mm DN50	71	9.989-665.0			DN 50			<input type="checkbox"/>
Kör delik nozulları								
Nozzle Blind hole nozzle DN40	72	9.989-671.0			DN 40			<input type="checkbox"/>
Nozzle Blind hole nozzle bended 60° DN40	73	9.989-669.0			DN 40			<input type="checkbox"/>
Nozzle Blind hole nozzle bended 90° DN40	74	9.989-667.0			DN 40			<input type="checkbox"/>
Nozzle Blind hole nozzle bended 90° 200	75	9.989-670.0			DN 40			<input type="checkbox"/>
Standard fırçalar								
	76	9.981-431.0			DN 40			<input type="checkbox"/>
	77	9.981-432.0			DN 50			<input type="checkbox"/>
Kalem fırçalar								
Brush ø82 mm DN40	78	9.989-609.0			DN 40			<input type="checkbox"/>
Brush ø82 mm DN50	79	9.989-608.0			DN 50			<input type="checkbox"/>
Yüzey fırçaları								
Brush PP 24 mm DN40	80	9.989-610.0			DN 40			<input type="checkbox"/>
Süpürge fırçası	81	9.981-911.0			DN 40			<input type="checkbox"/>
	82	9.981-912.0			DN 50			<input type="checkbox"/>

Mevcut aksesuarlar

IVC 60/12-1 TACT EC 1.576-102.0

KÄRCHER



		Sipariş No.	Miktar		uzun- luk/ Genişlik	Fiyat	Tanımlama	
Silindir fırçalar								
Suction brush pipelines 4inch, DN40	83	9.989-047.0		DN 40				<input type="checkbox"/>
Suction brush pipelines 8inch, DN40	84	9.989-048.0		DN 40				<input type="checkbox"/>
Suction brush pipelines 12inch, DN40	85	9.989-049.0		DN 40				<input type="checkbox"/>
Ön ayırıcı								
Separator Tc Op Liquid 125 l DN70	86	9.989-686.0		DN 70				<input type="checkbox"/>

Mevcut aksesuarlar